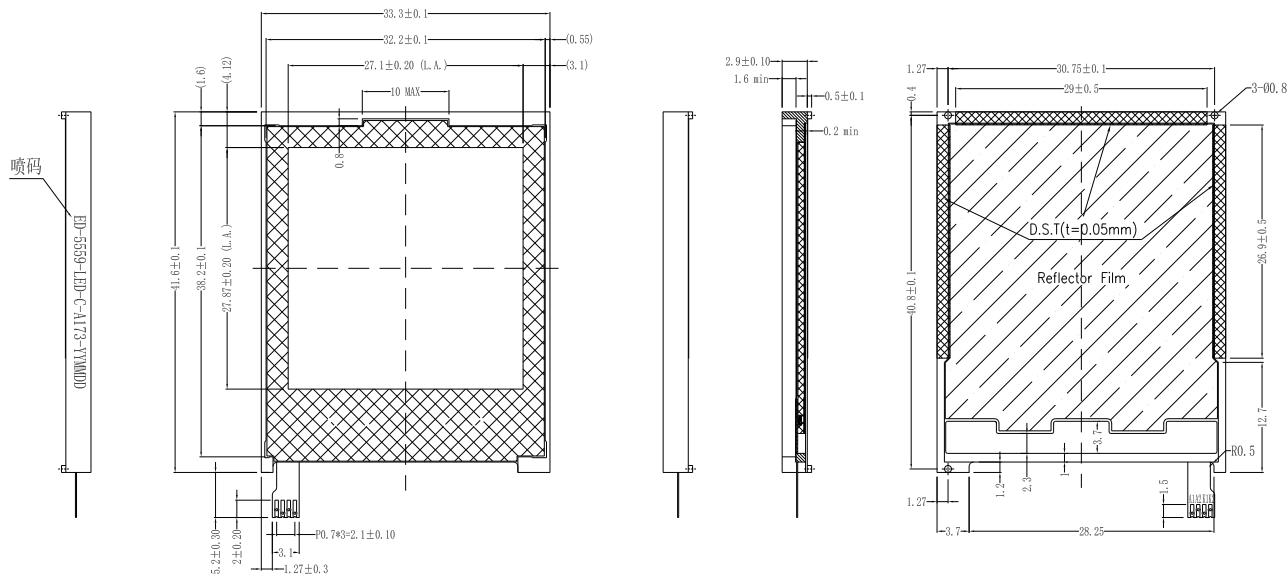


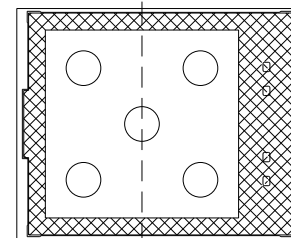
1. Mechanical Outline (Unspecified Tolerances is $\begin{matrix} .xx \pm 0.1 \\ .x \pm 0.2 \end{matrix}$)

- 1. □ : CRITICAL DIMENSION.
- 2. : REFERENCE DIMENSION.
- 3. : SAFETY CHARACTERISTIC.
- 4. ▽ : SPECIAL CHARACTERISTIC.
- 5. : RoHS COMPLIANCE.

ISSUE	AMENDMENT	DATE
A0	First issue	20080810



4. Test Point

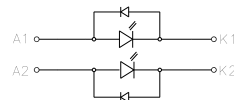


2. Electrical-Optical Characteristics (Ta=25°C)

Item	Symbol	MIN.	TYP.	MAX.	Unit	Condition
Forward Voltage	Vf	3.0	3.2	3.4	V	If = 15*2 mA
Colour Coordinate (Tolerances is ±0.01)	x	0.270		0.310	--	
	y	0.270		0.310	--	
Uniformity	Avg	80			%	
Luminance	Lv	2200	2500		cd/m ²	
Reverse Current (Per LED)	Ir		15	20	mA	Vr = 0.8 V

• Operating Temperature: -30~+70°C • Storage Temperature: -40~+80°C

3. Circuit Diagram (LED 2 SMT) Color: WHITE Package: 020



DIXIAN 帝显 深圳市帝显电子有限公司
SHENZHEN DIXIAN ELECTRONIC CO., LTD

MODEL NO.:		SY062A-05	
CUSTOMER'S NO.:		ED-5559-LED/C	
SHEET 页码	THIRD ANGLE PROJECTION 	UNIT mm	
DESIGN: 设计			
CHECKED: 检查			
COUNTERSIGN: 复核			
APPROVED: 批准			
DRAWING No:	CUST图		REV A0